

## NORTH CAROLINA

## BRUNSWICK

Child population: 2,311,620  
Percent under age six: 31.5%  
Number of live births: 118,725

Child population: 22,779  
Percent under age six: 28.1%  
Number of live births: 1,026



### A STRONG START

Women who receive early prenatal care:

**65.3%**

2019

67.1% 2018

Babies born at a low birthweight:

**8.0%**

2019

9.2% 2018

Babies born pre-term:

**9.7%**

2019

11.7% 2018



### FAMILY ECONOMIC SECURITY

Children living in poor or low-income homes:

**42.8%**

2019

46.0% 2018

Children in households that are food insecure:

**21.6%**

2018

21.9% 2017

Median family income:

**\$58,236**

2015-2019

\$54,406 2014-2018



### NURTURING HOMES & COMMUNITIES

Delinquency rate per 1,000 youth ages 6-15:

**15.1**

2019

14.4 2018

Children assessed for abuse or neglect per 1,000:

**67.5**

2019

68.9 2018

Teen births per 1,000 girls ages 15-17:

--

2019

-- 2018



### HIGH-QUALITY EDUCATION

3rd grade students scoring proficient in reading:

**57.0%**

2018-2019

53.8% 2017-2018

High school students graduating on time\*:

**84.5%**

2020

84.7% 2019

Residents with bachelor's degree or higher:

**29.9%**

2019

28.6% 2018



### HEALTH & WELLNESS

Children without health insurance:

**3.9%**

2019

4.5% 2018

Infant mortality per 1,000 live births:

**4.9**

2019

11.1 2018

Child deaths per 100,000:

**46.2**

2019

49.5 2018

\*Percentage is not reported if it is greater than 95% or less than 5%.



NC Pathways to Grade-Level Reading whole-child Measure of Success.  
Learn more at: [www.buildthefoundation.org/pathways](http://www.buildthefoundation.org/pathways).

**NC Child**  
The Voice for North Carolina's Children



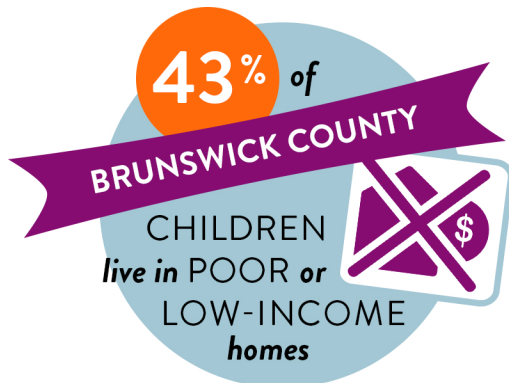
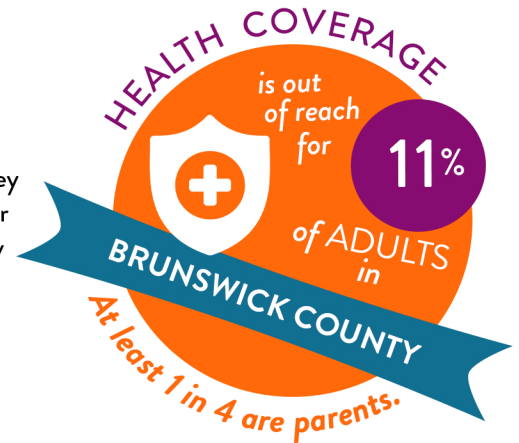
Key data points for families in

# BRUNSWICK COUNTY

Using every tool for pandemic recovery

## HEALTH COVERAGE IS KEY FOR FAMILY FINANCIAL STABILITY.

Hundreds of thousands of North Carolina families have lost the health insurance they previously received through their jobs. Congress has put forward major incentives for states like North Carolina to expand health coverage to those who did not previously qualify for either Medicaid, or subsidies under the Affordable Care Act.



## LOW INCOMES, JOB LOSS, AND PERSISTENT POVERTY.

Poverty is one of the most important factors affecting a child's long-term health and development. Those who were earning the lowest wages before the pandemic have been most likely to lose jobs and suffer long-term hardship.

Share this County Data Card with leaders and elected officials in your community!

## About the County Data Cards

These County Data Cards highlight key indicators of child well-being that help policy-makers understand where to target relief so that it is most sustainable and effective.

- These data benchmarks indicate how North Carolina's children were faring before COVID-19 struck.
- Many families are fighting new and increased stressors like job loss, hunger, untreated health concerns, and isolation from community support. Traumatic episodes like these are shown to have long-term impacts on children's healthy development.
- Officials should use these data points as a baseline and watch for changes as they allocate funds and adopt policies focused on long-term recovery.



For complete data notes and sources, visit [www.ncchild.org](http://www.ncchild.org).  
Contact Vikki Crouse, KIDSCOUNT Program Director, with any questions: [vikki@ncchild.org](mailto:vikki@ncchild.org)